

# LYNN TOWNSHIP

Each township has six files containing six sections in each, and one file containing all 36 sections.

Lynn01to06.pdf  
Lynn07to12.pdf  
Lynn13to18.pdf  
Lynn19to24.pdf  
Lynn25to30.pdf  
Lynn31to36.pdf  
LynnAll36.pdf

The points are listed starting with the point above the SE corner and continuing in a counter-clockwise rotation around the section. This normally begins with the East point, Northeast, then North, but may also include Witness Corners, and/or Meander Corners.

## **Definitions**

**Witness Corner:** A witness corner “stands in” when the true corner cannot be monumented or occupied because of difficult terrain or obstruction of the corner sight. The witness corner must be on the section line and is usually 5 or 10 chains away from the true corner.

**Meander Corner:** The intersection of a township, range, or section line and the banks of a navigable stream or meandering body of water.

# Certificate of Location of Government Corner

SKETCH OF REFERENCE TIES  
(NO SCALE)



SECTION 7

SECTION 8

Nail and bottle cap  
East face of power pole  
120.45

42.76

field line

Punch hole on top, each end  
of 12 inch CMP 38 feet long

43.63

cast iron monument

fence

center line of gravel road

173.82  
Nail and bottle cap  
East face of power pole

Statement of evidence relative to this corner location on sheet 2

I hereby certify that this document was prepared by me or under my direct supervision.

Willard Pellinen  
Willard Pellinen  
McLeod County Surveyor  
License No. 9626

Date 4/1/90

OFFICE OF THE COUNTY RECORDER  
MCLEOD COUNTY, MINNESOTA.

I hereby certify that this document was filed in this office at 4 o'clock P.M. on the 4th day of April, 1990.

Carmen Pottier, County Recorder  
By \_\_\_\_\_, Deputy

Document No. 232649

EAST QUARTER        corner, Section 7, Township 116 North, Range 30 West

## Certificate of Location of Government Corner

This corner was originally established by the General Land Office in 1855. Thomas Simpson set a post in a mound of earth with pits, trench, charred stake and planted osage orange seeds at the northeast and southwest corners of mound

1930. Old survey notes by E.L.Higgins show a cedar post under a stone at this corner.

December 28, 1978. We measured the east line of Section 7 and set a temporary corner in the center line of the road in line with a fence to the east.

August 29, 1979. We dug for the corner, John Tupa from Hutchinson with a backhoe. Down at 2 feet below the road surface we found a 5 inch diameter stone with a rotted wood post below it. This was within a foot of 1933 distance by the county highway department to the northeast corner of the Section and within 6 feet of being on a split between the section corners.

August 30, 1979. We set a Mcleod County cast iron monument at the location of the found stone and post.

August 19, 1981. We reset a cast iron monument at the corner and took new reference ties. Old monument had been destroyed by road work.

March 10, 1989. We found only 2 ties remaining. We found the monument in good condition and took 2 additional reference ties.

We feel the stone and wood post we found in 1979 are the same stone and post shown in Higgins' survey notes of 1930, and have perpetuated the correct location of the quarter corner.

# Certificate of Location of Government Corner

## SKETCH OF REFERENCE TIES

(NO SCALE)

SECTION 6

SECTION 5

center line of road

Nail and bottle cap  
NE face of power pole  
55.92

cast iron monument  
center line of road

Nail and bottle cap  
NW face of power pole  
53.36

40.64  
Nail and bottle cap  
NE face of post for UG tel.

SECTION 7

SECTION 8

Statement of evidence relative to this corner location on sheet 2

I hereby certify that this document was prepared by me or under my direct supervision.

Willard Pellinen

Willard Pellinen  
McLeod County Surveyor  
License No. 9626

Date 8/6/89

OFFICE OF THE COUNTY RECORDER  
MCLEOD COUNTY, MINNESOTA.

I hereby certify that this document was filed in this office at 9 o'clock A.M. on the 15th day of Aug, 19 89.

Carmen Potlie, County Recorder

By \_\_\_\_\_, Deputy

Document No. 229473

NORTHEAST                      corner, Section 7, Township 116 North, Range 30 West

## Certificate of Location of Government Corner

This corner was set in 1855 by the General Land Office. Thomas Simpson "set post to sections 5,6,7 and 8. Erected mound with trench and pits, charred stake and osage orange seeds at each angle."

July 5, 1978. We dug for the corner, John Tupa from Hutchinson with a backhoe. We found an 18 inch long 1 inch diameter steel shaft, top down 1½ feet. Found a 15 inch by 10 inch stone beside the steel shaft, set on end, with a rotted wood stake beside the stone. Took photos of stone, shaft and wood stake and took reference ties. We removed the shaft and moved the stone to make room for the cast iron monument. Buried the stone near by.

July 13, 1978. We set a McLeod County cast iron monument.

May 19, 1980. Set ½ inch diameter iron pipes at 100.00 and 200.00 feet west of the monument. Ties and monument could possibly be destroyed by road construction.

August 19, 1981. We found the cast iron monument in good condition after road construction. Took new reference ties.

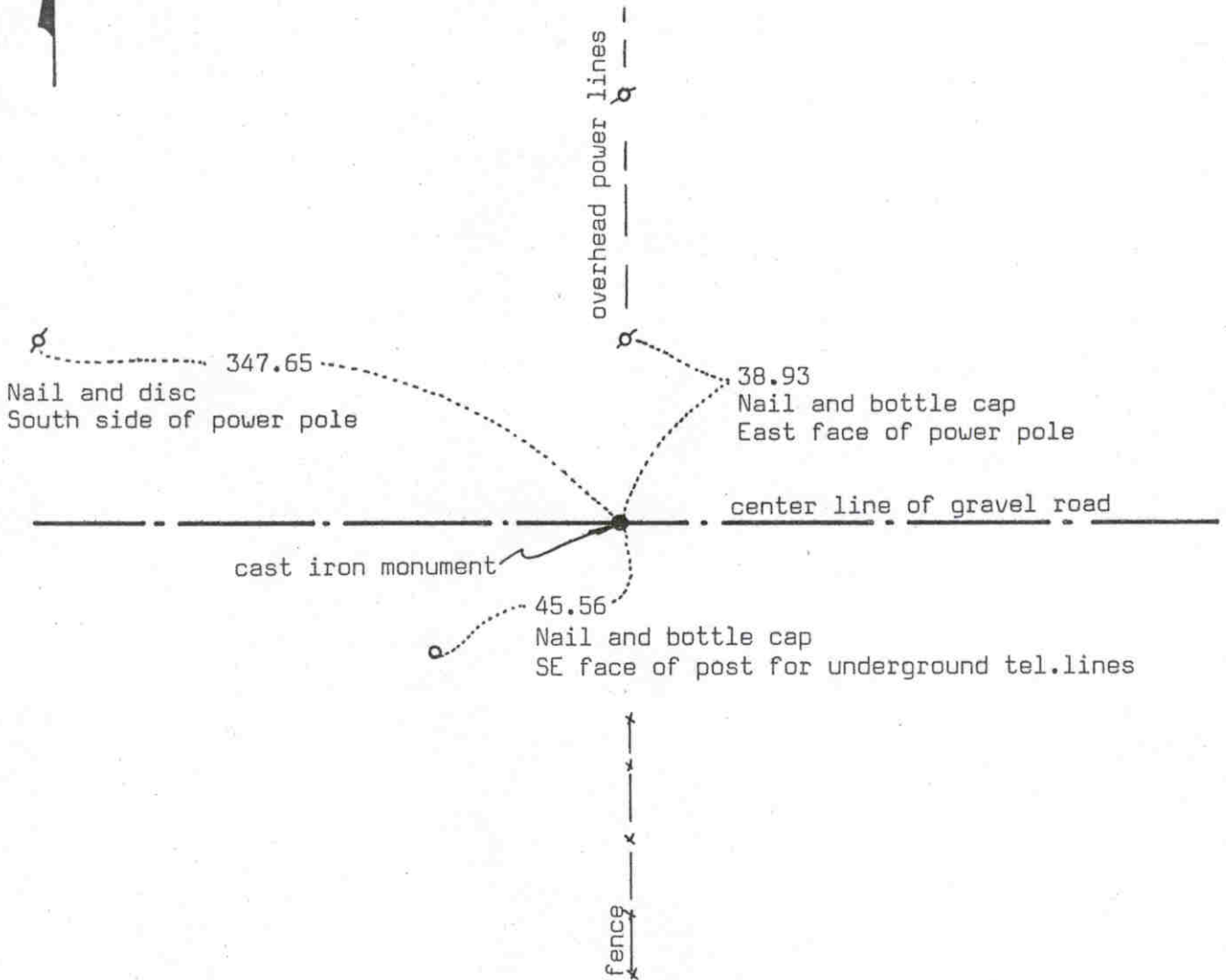
February 24, 1989. We found the monument in good condition and the reference ties good.

We accept the steel shaft and stone as having perpetuated the true section corner.

# Certificate of Location of Government Corner



SKETCH OF REFERENCE TIES  
(NO SCALE)



Statement of evidence relative to this corner location on sheet 2

I hereby certify that this document was prepared by me or under my direct supervision.

Willard Pellinen

Willard Pellinen  
McLeod County Surveyor  
License No. 9626

Date 8/6/89

OFFICE OF THE COUNTY RECORDER  
MCLEOD COUNTY, MINNESOTA.

I hereby certify that this document was filed in this office at 9 o'clock A.M. on the 15th day of Aug, 1989.

Carmen (Pattie), County Recorder

By \_\_\_\_\_, Deputy

Document No. 229474

## Certificate of Location of Government Corner

This corner was originally set by Thomas Simpson of the General Land Office in 1855. He set a post, built mound, dug trench and pits, set charred stake and planted osage orange seeds at northeast and southwest corners of mound.

December 28, 1978. We measured the north line of Section 7 and set a temporary quarter corner on the center line of the road in line with fences north and south.

January 8, 1979. We talked with Irene Scott, 70 years old, lived in the Southwest Quarter of Section 6 since 1942. She thought the center line of the road and fence running north were on the section and quarter section lines.

August 29, 1979. We dug for the corner, John Tupa from Hutchinson with a backhoe. We found a stone with a wood stake beside it down 3 feet below the road surface. Took photo of stone and stake and tied off.

August 30, 1979. We set a McLeod County cast iron monument at the corner. Corner falls in center of road, in line with the fences north and south. It also is within 5 feet of being on a proration of the government distances to the northeast and northwest corners of the section.

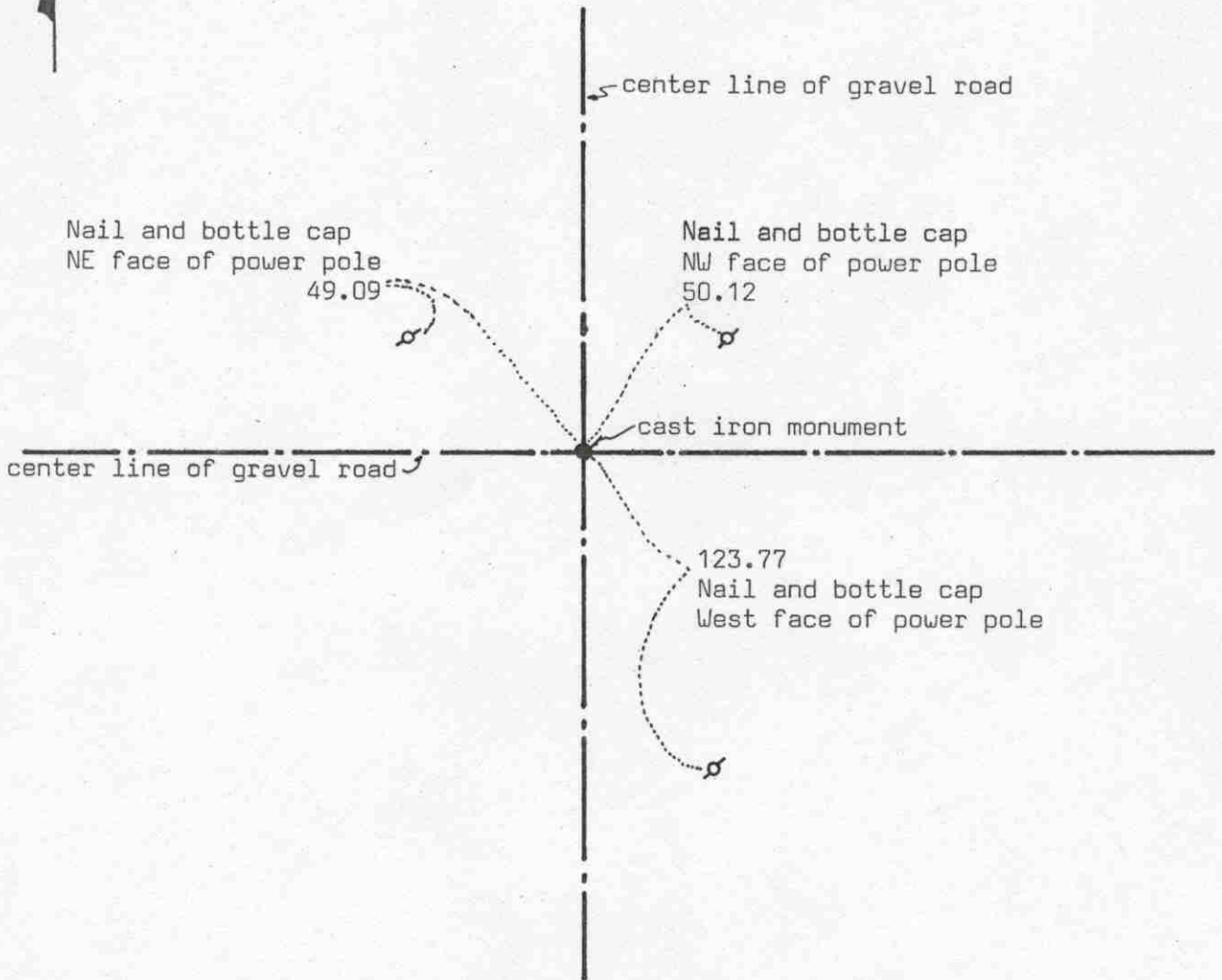
February 24, 1989. We found the monument in good condition and the reference ties good.

We accept the stone and wood stake as having perpetuated the correct location of the quarter corner.

# Certificate of Location of Government Corner



SKETCH OF REFERENCE TIES  
(NO SCALE)



Statement of evidence relative to this corner location on sheet 2

I hereby certify that this document was prepared by me or under my direct supervision.

Willard Pellinen

Willard Pellinen  
McLeod County Surveyor  
License No. 9626

Date 7/31/89

OFFICE OF THE COUNTY RECORDER  
MCLEOD COUNTY, MINNESOTA.

I hereby certify that this document was filed in this office at 9 o'clock A.M. on the 15th day of Aug, 19 89.

Carmen Gottlieb, County Recorder

By \_\_\_\_\_, Deputy

Document No. 229475



NORTHWEST            corner, Section 7, Township 116 North, Range 30 West

## *Certificate of Location of Government Corner*

This corner was originally established by the government in 1855. John Ryan "set post, corner to sections 1,6,7 and 12, deposited charcoal, dug pits and trench, built mound and planted osage orange seeds at corners of mound.

December 28, 1978. We found a half inch diameter re-rod down 3 feet below the surface on the center line intersection of gravel roads.

September 10, 1985. We measured 2655.5 feet to the west quarter corner of Section 6 and 2656.5 feet south to a easterly extension of a fence to the west.

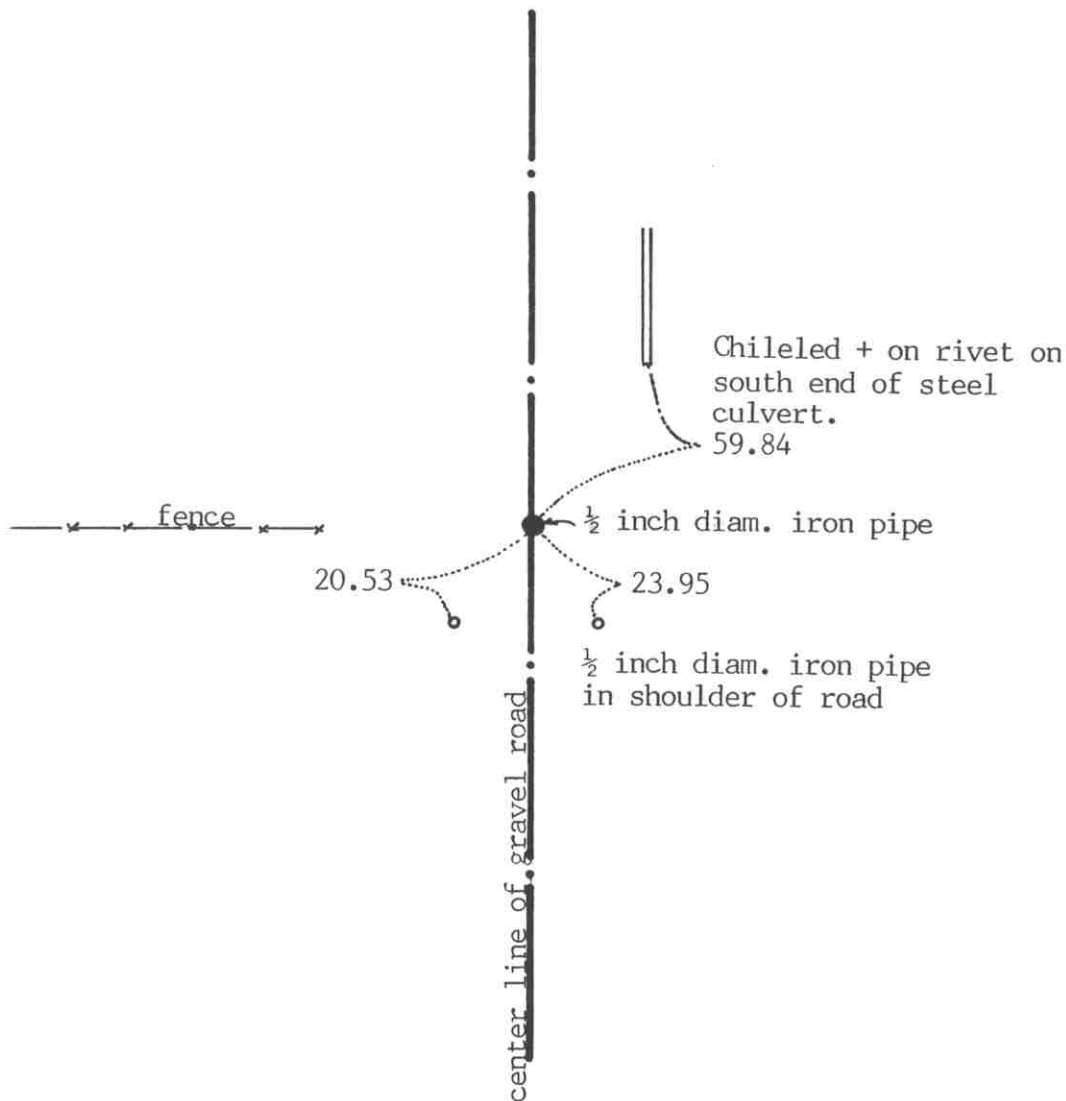
On May 13, 1986, we set a McLeod County cast iron monument at the corner and took reference ties.

February 24, 1989. We found the monument in good condition but all of the reference ties gone. We took new ties.

WEST QUARTER corner, Section 7, Township 116 North, Range 30 West

# Certificate of Location of Government Corner

SKETCH OF REFERENCE TIES  
(NO SCALE)



SECTION 12 T. 116 R. 31

SECTION 7 T. 116 R. 30

Statement of evidence relative to this corner location on sheet 2

I hereby certify that this document was prepared by me or under my direct supervision.

Willard Pellinen

Willard Pellinen  
McLeod County Surveyor  
License No. 9626

Date January 3, 1993

OFFICE OF THE COUNTY RECORDER  
MCLEOD COUNTY, MINNESOTA.

I hereby certify that this document was filed in this office at 9 o'clock A. M. on the 6th day of January, 1993.

(Carmen) (Hollie) (Julder), County Recorder

By \_\_\_\_\_, Deputy

Document No. 249901

WEST QUARTER corner, Section 7, Township 116 North, Range 30 West

## Certificate of Location of Government Corner

1855, This corner was originally established by the General Land Office. John Ryan set a post, deposited charcoal, dug pits and trench, built mound and planted osage orange seeds at the corners of the mound.

August, 1979. McCombs Knutson Associates (Dickman Knutson, county surveyor) dug for the corner on the center line of the north-south road in line with a fence to the west. They found no evidence of the government corner.

September 10, 1985. We set a  $\frac{1}{2}$  inch diameter iron pipe on the center line of the road in line with the fence to the west and took available reference ties. This corner falls approximately 1.3 feet west and 1 foot south of <sup>being</sup> ~~line~~ on line and split between the section corners. <sub>being</sub>

December 1, 1992. We found the iron pipe and checked the reference ties.

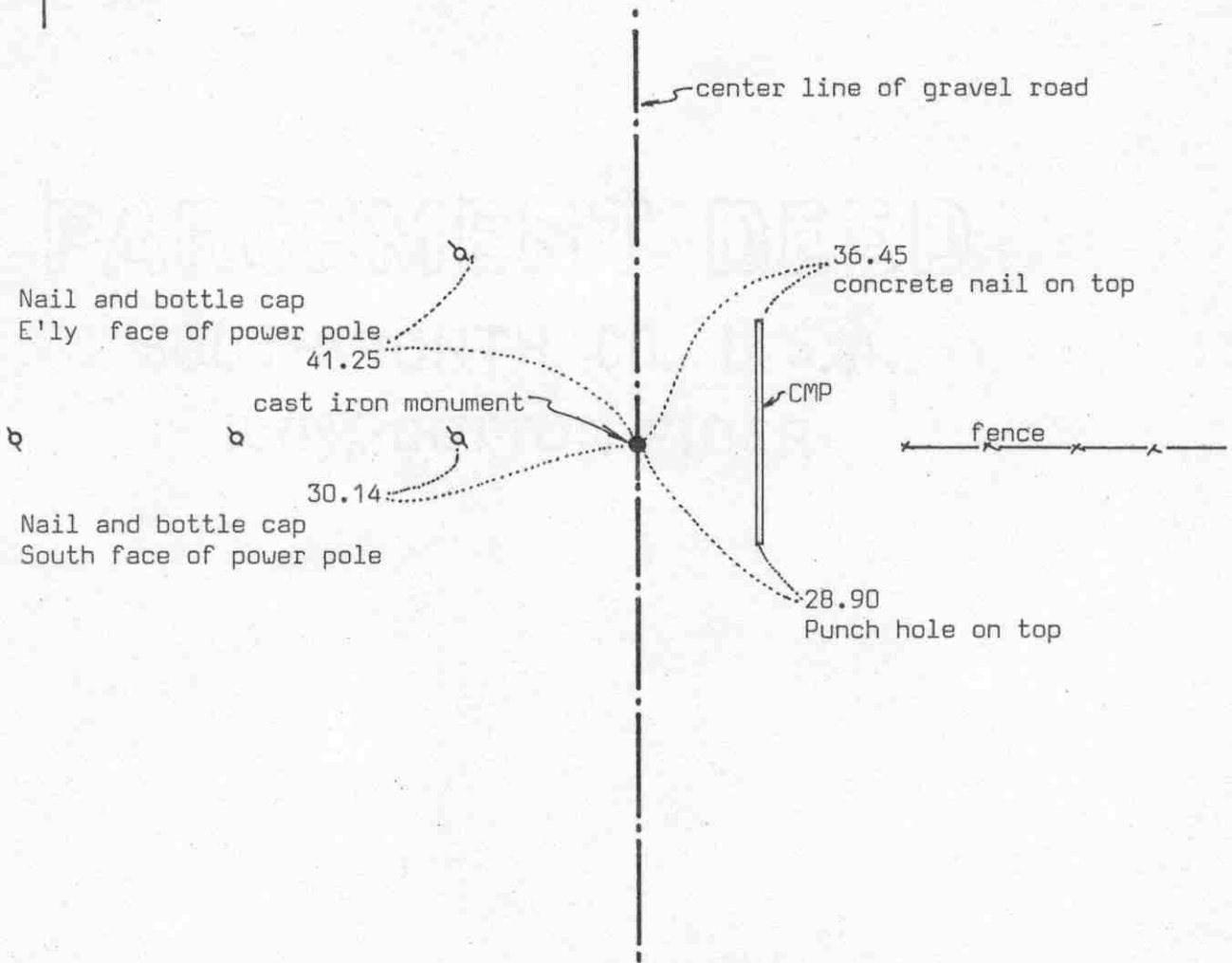
We feel the center line of the north-south road and the fence to the west have perpetuated the correct location of the quarter corner.

# Certificate of Location of Government Corner



## SKETCH OF REFERENCE TIES

(NO SCALE)



Statement of evidence relative to this corner location on sheet 2

I hereby certify that this document was prepared by me or under my direct supervision.

Willard Pellinen

Willard Pellinen  
McLeod County Surveyor  
License No. 9626

Date 8/13/89

OFFICE OF THE COUNTY RECORDER  
MCLEOD COUNTY, MINNESOTA.

I hereby certify that this document was filed in this office at 9 o'clock A.M. on the 15<sup>th</sup> day of Aug, 19 89.

Carmen Potlie County Recorder

By \_\_\_\_\_, Deputy

Document No. 229476

EAST QUARTER corner, Section 8, Township 116 North, Range 30 West

## Certificate of Location of Government Corner

This corner was originally set by the General Land Office in 1855. Thomas Simpson "set quarter section post in mound with trench and pits, charred stake and osage orange seeds northeast and southwest.

March 22, 1930. E.L.Higgins, surveyor, set iron corner half way between section corners in a survey in section 9.

June 13, 1930. E.L.Higgins shows a steel corner in place.

January 6, 1979. Roland Tauer, 62 years old, in the Southeast Quarter of Section 8 for 22 years, said the corner is in the center of the road in line with the fence running east.

January 9, 1979. We measured the east line of Section 6 and set a temporary corner half way between the section corners.

August 30, 1979. We dug for the corner at our temporary corner, John Tupa from Hutchinson with a backhoe. We found a gear and shaft down 3 feet below the road surface, took a photo and took reference ties. This was within a tenths of a foot of Higgins' 1930 distances to the section corners.

July 8, 1980. We set a McLeod County cast iron monument and took additional reference ties.

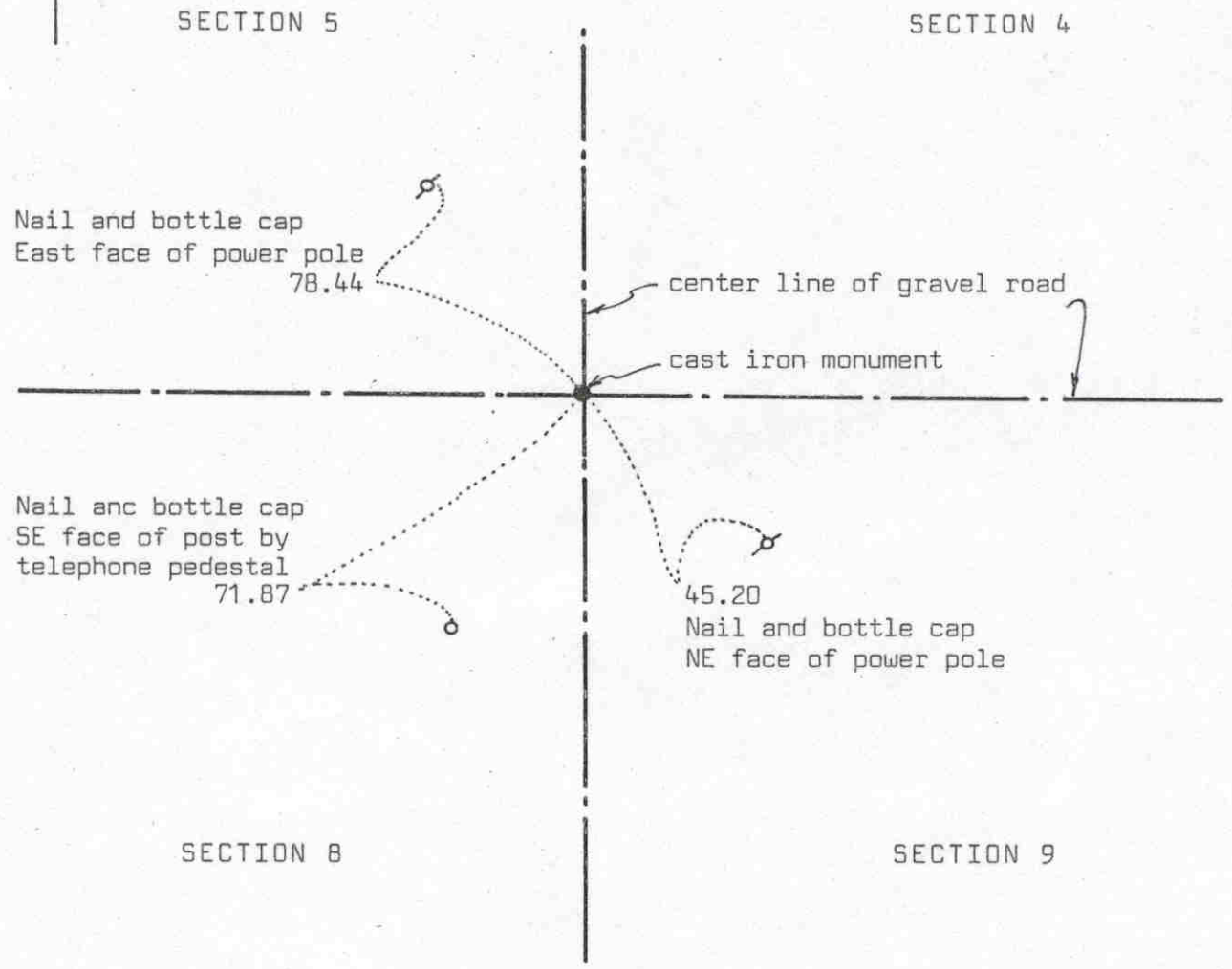
February 28, 1989. We found the cast iron monument in good condition and the reference ties good.

We believe the steel shaft and gear we found is the same corner set by Higgins in 1930 and that it had perpetuated the true location of the quarter corner.

# Certificate of Location of Government Corner



SKETCH OF REFERENCE TIES  
(NO SCALE)



Statement of evidence relative to this corner location on sheet 2

I hereby certify that this document was prepared by me or under my direct supervision.

Willard Pellinen  
 Willard Pellinen  
 McLeod County Surveyor  
 License No. 9626  
 Date 4/1/90

OFFICE OF THE COUNTY RECORDER  
MCLEOD COUNTY, MINNESOTA.

I hereby certify that this document was filed in this office at 4 o'clock P.M. on the 4th day of April, 1990.

Carmen Jotlie, County Recorder  
 By \_\_\_\_\_, Deputy  
 Document No. 232648

NORTHEAST corner, Section 8, Township 116 North, Range 30 West

## Certificate of Location of Government Corner

1855. Thomas Simpson of the General Land Office established this corner. He set a post, erected mound with trench, pits charred stake and osage orange seeds at each angle.

April 22, 1930. E.L.Higgins found a stone at the corner. He surveyed in the Northwest Quarter of Section 9.

1967. McCombs Knutson Associates, Dickman Knutson, county surveyor, found an iron pin at the center line intersection of the roads. Lew Merrill, former county surveyor, says this iron pin is the correct corner. He said Higgins set this corner after he found a stone. Knutson replaced the iron pin with a McLeod County cast iron monument and took reference ties.

March 10, 1989. We found no reference ties remaining. We dug and found the monument down 8 inches below the road surface in good condition. We took new available reference ties.

We feel the iron pin found by Knutson and later the cast iron monument have perpetuated the correct location of the section corner.

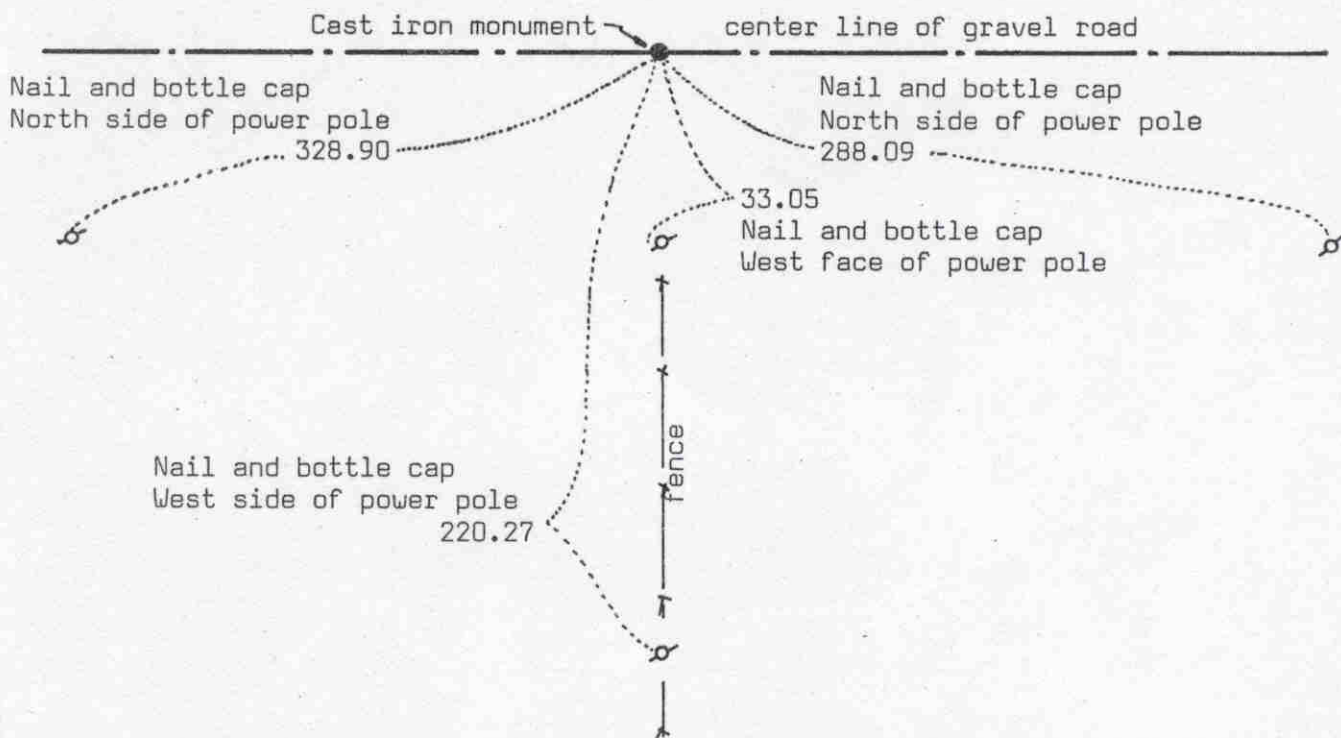
# Certificate of Location of Government Corner



## SKETCH OF REFERENCE TIES

(NO SCALE)

ditch



Statement of evidence relative to this corner location on sheet 2

I hereby certify that this document was prepared by me or under my direct supervision.

Willard Pellinen  
Willard Pellinen  
McLeod County Surveyor  
License No. 9626

Date 8/6/89

OFFICE OF THE COUNTY RECORDER  
MCLEOD COUNTY, MINNESOTA.

I hereby certify that this document was filed in this office at 9 o'clock A.M. on the 15th day of Aug, 19 89.

Carmen Potkie, County Recorder

By \_\_\_\_\_, Deputy

Document No. 229477



NORTH QUARTER \_\_\_\_\_ corner, Section 8, Township 116 North, Range 30 West

## Certificate of Location of Government Corner

This corner was originally set in 1855 by Thomas Simpson of the General Land Office. He "set quarter section post in mound with trench, pits, charred stake and planted osage orange seeds northeast and southwest.

June, 1966. Roy Hansen, surveyor, found a  $\frac{1}{2}$  inch diameter re-rod on the center line of the road in line with a fence to the south. Adjoining property owners said center line of road and fence mark the section line and quarter line.

August, 1975. We dug for the corner, John Tupa from Hutchinson with a backhoe. We found the re-rod down 2 feet below the surface of the road. Found nothing else.

July 6, 1976. We set a McLeod County cast iron monument at the location of the re-rod and took reference ties.

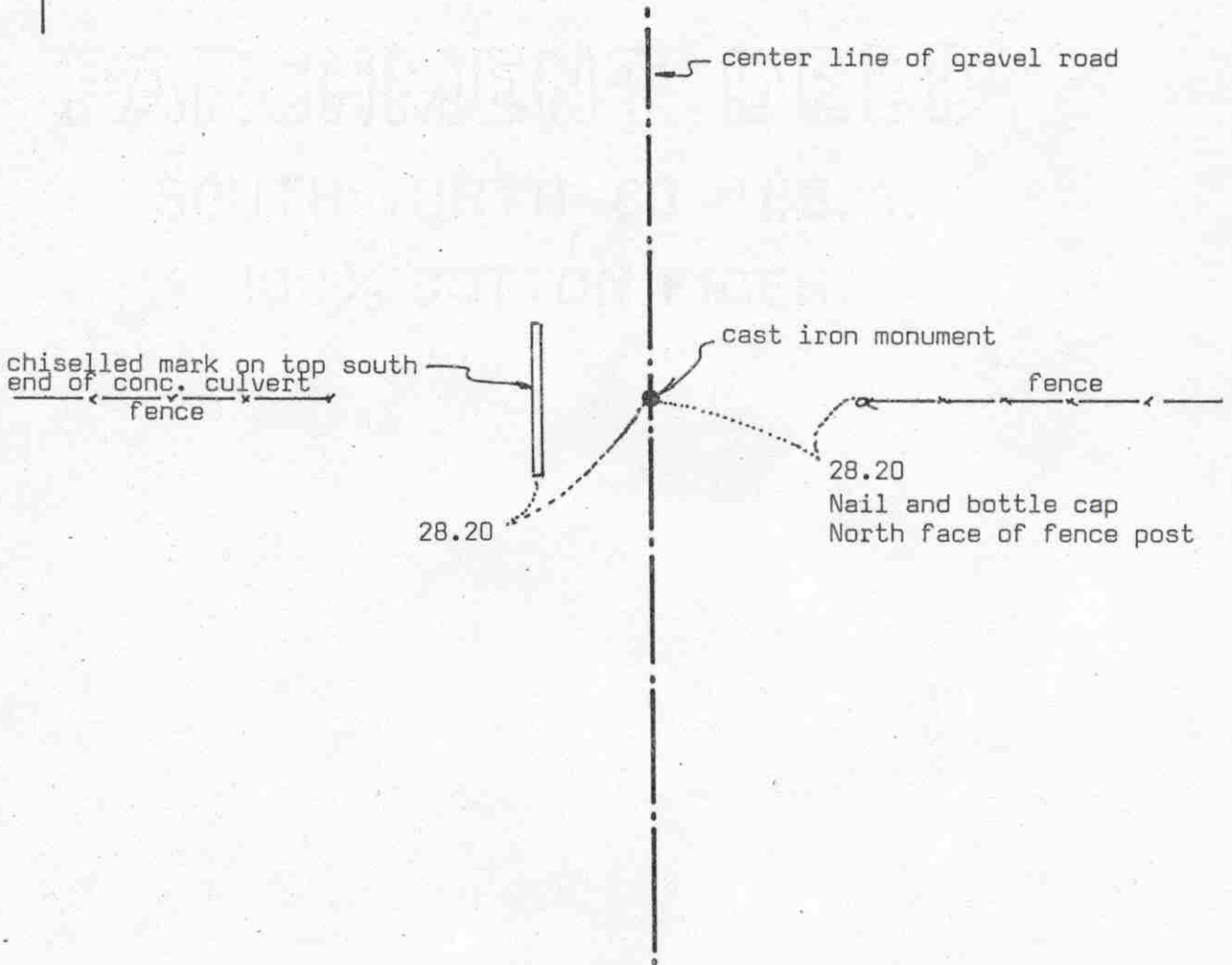
February 24, 1989. We found the cast iron monument in good condition and the reference ties good.

We accept the location of the found re-rod as having perpetuated the correct location of the quarter corner. It fits long standing occupation lines, has been accepted as the correct location by adjoining owners and it is within 6 feet of being half way between section corners.

# Certificate of Location of Government Corner



SKETCH OF REFERENCE TIES  
(NO SCALE)



Statement of evidence relative to this corner location on sheet 2

I hereby certify that this document was prepared by me or under my direct supervision.

Willard Pellinen

Willard Pellinen  
McLeod County Surveyor  
License No. 9626

Date 8/12/89

OFFICE OF THE COUNTY RECORDER  
MCLEOD COUNTY, MINNESOTA.

I hereby certify that this document was filed in this office at 9 o'clock A.M. on the 15th day of Aug, 19 89.

Carmen Jostlie County Recorder

By \_\_\_\_\_, Deputy

Document No. 229479

EAST QUARTER corner, Section 9, Township 116 North, Range 30 West

## Certificate of Location of Government Corner

This corner was originally set in 1855 by the General Land Office. Thomas Simpson "set quarter section post in mound with trench and pits, charred stake and osage orange seeds northeast and southwest."

1929. E.L.Higgins, surveyor, found a stone at the corner.

1938. County Highway Department set double hubs at an assumed corner, fences east and west.

1967. McCombs Knutson Associates (Dickman Knutson, county surveyor) found a 2 inch diameter bolt at the the center line of the road, fences east and west.

Knutson dug below the bolt and found two hubs and below the hubs found a stone. Set a McLeod County cast iron monument and took reference ties.

February 27, 1989. We found the cast iron monument in good condition and the ties o.k.

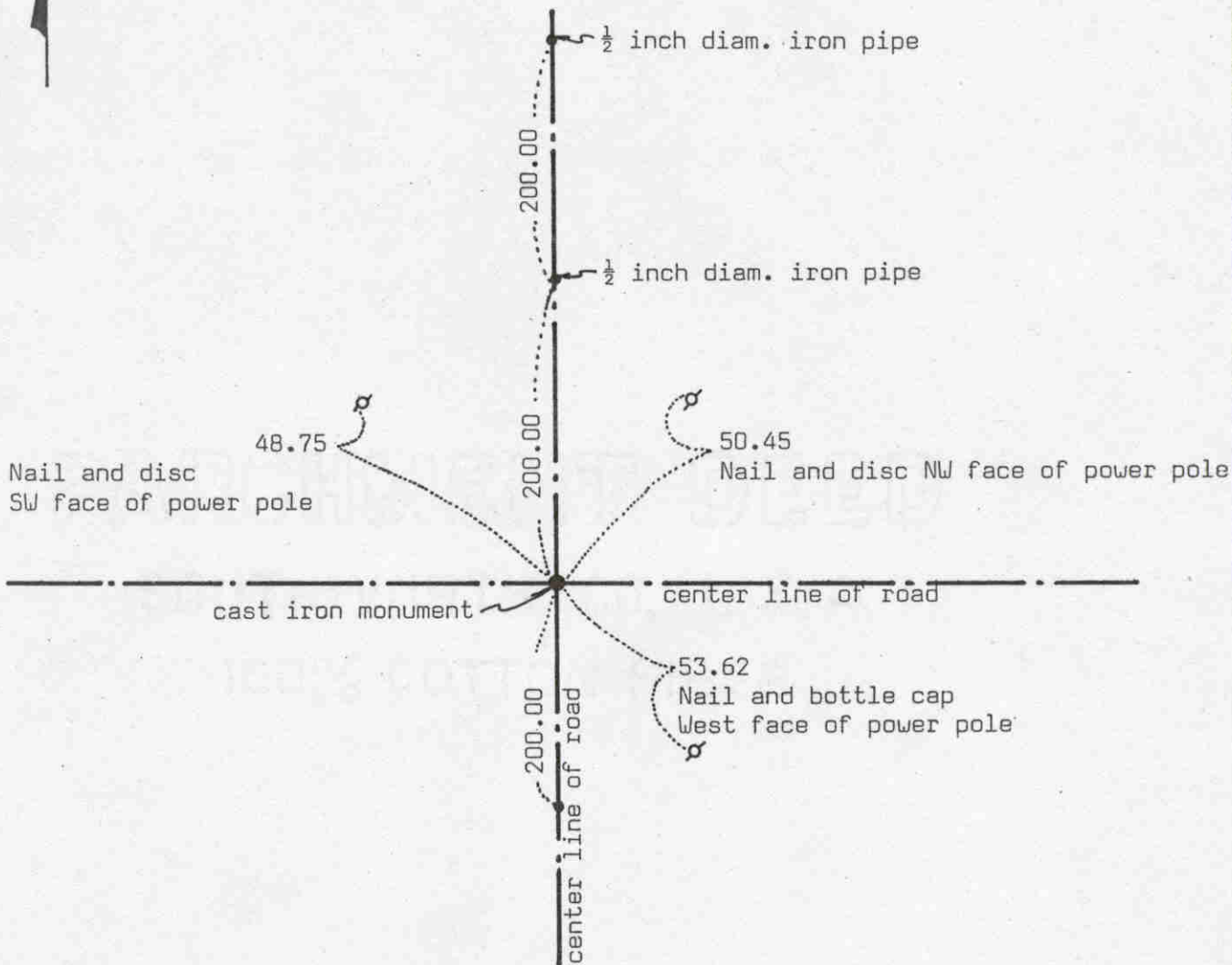
We accept the stone found by Knutson as having perpetuated the correct location of the quarter corner.

# Certificate of Location of Government Corner



## SKETCH OF REFERENCE TIES

(NO SCALE)



Statement of evidence relative to this corner location on sheet 2

I hereby certify that this document was prepared by me or under my direct supervision.

Willard Pellinen

Willard Pellinen  
McLeod County Surveyor  
License No. 9626

Date 8/6/89

OFFICE OF THE COUNTY RECORDER  
MCLEOD COUNTY, MINNESOTA.

I hereby certify that this document was filed in this office at 9 o'clock A.M. on the 15th day of Aug, 1989.

Carmen Potie, County Recorder

By \_\_\_\_\_, Deputy

Document No. 229478

NORTHEAST corner, Section 9, Township 116 North, Range 30 West

## Certificate of Location of Government Corner

This corner was originally set by the General Land Office in 1855. Thomas Simpson set a post, erected mound with trench and pits, charred stake and he planted osage orange seeds at each corner of the mound.

March 22, 1927. E.L.Higgins set an iron stake at the corner.

October, 1939. The county highway department found iron pin set by Higgins in 1927.

April 12, 1966. Roy Hansen, surveyor, found an iron pin at the corner and used it as the correct corner in a survey in Section 10.

December, 1967. McCombs Knutson Associates (Dickman Knutson, county surveyor) found an iron pin at the center line intersection of the roads.

April, 1972. Knutson replaced the iron pin with a McLeod County cast iron monument and took reference ties.

May 9, 1984. We found the cast iron monument and set  $\frac{1}{2}$  inch diameter iron pipes 200.00 feet and 400.00 feet north and 200.00 feet south of the monument. Other reference ties will be destroyed due to road construction.

July 7, 1985. Found the cast iron monument still in place after road construction and the iron pipe reference ties check o.k. We took new reference ties to new power poles.

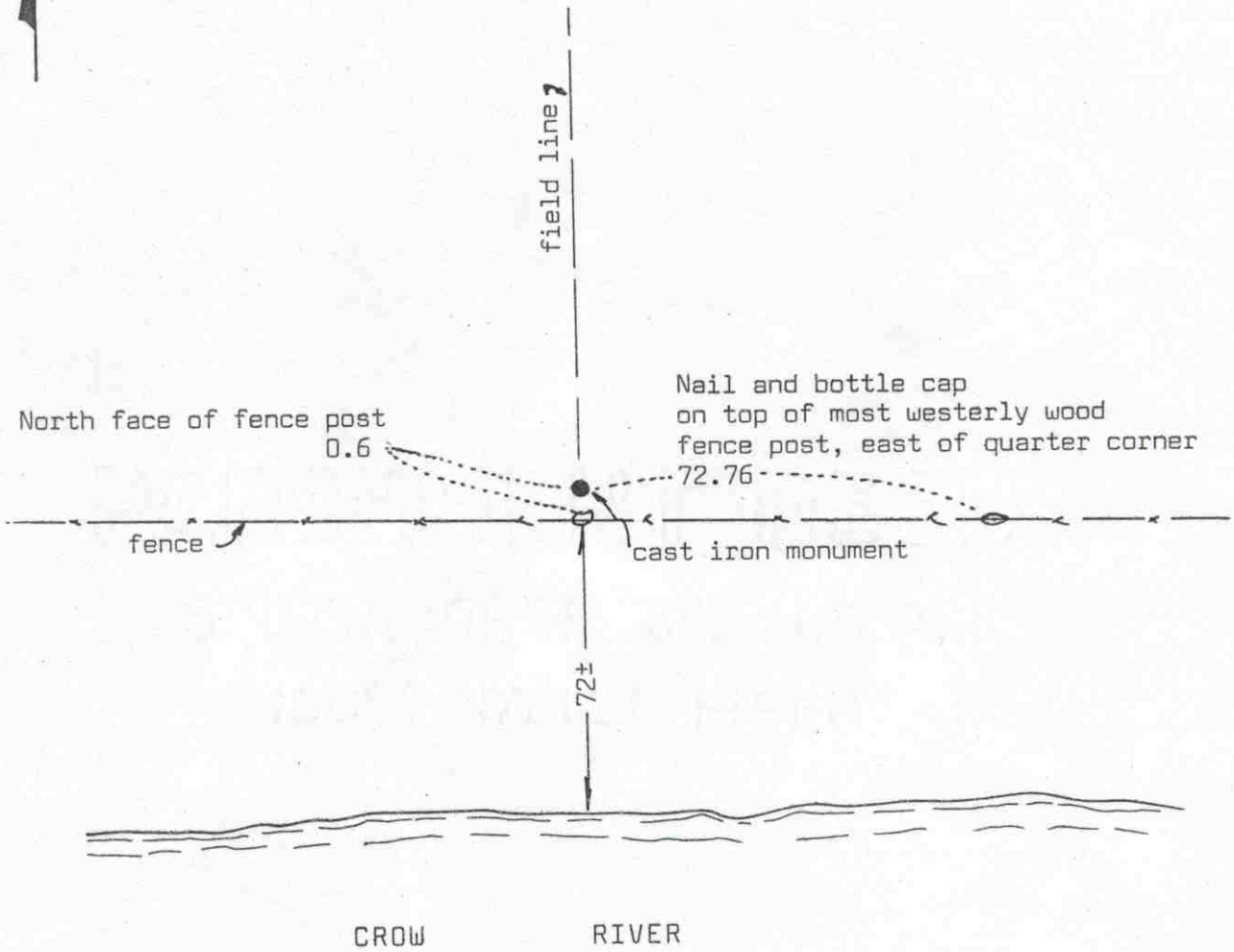
February 24, 1989. We found the monument in good condition and the reference ties good.

We feel the iron pin found by the county highway department in 1927 and by Roy Hansen in 1966 and by Knutson in 1967 is the same iron set by E.L.Higgins in 1927 and has perpetuated the true location of the section corner.

# Certificate of Location of Government Corner



SKETCH OF REFERENCE TIES  
(NO SCALE)



Statement of evidence relative to this corner location on sheet 2

I hereby certify that this document was prepared by me or under my direct supervision.

Willard Pellinen  
 Willard Pellinen  
 McLeod County Surveyor  
 License No. 9626  
 Date 7/29/89

OFFICE OF THE COUNTY RECORDER  
 MCLEOD COUNTY, MINNESOTA.

I hereby certify that this document was filed in this office at 9 o'clock A.M. on the 15th day of Aug, 19 89.

Carmen Ostlie, County Recorder  
 By \_\_\_\_\_, Deputy

Document No. 229480

## Certificate of Location of Government Corner

This corner was originally established by the General Land Office in 1855. Thomas Simpson "set quarter section post in mound with trench, pits, charred stake and osage orange seeds NE and SW.

1930. E.L.Higgins set corner at old fence intersection as per testimony by Ed Sitz. Mr. Sitz had lived there for 30 to 40 years and said this was the original corner. Higgins had a distance of 2663 feet to the northwest corner and 2648 feet to the northeast corner of Section 9. He shows the corner to be  $10\frac{1}{2}$  feet south of a straight line between the section corners.

March 25, 1977. We found a  $\frac{3}{4}$  inch diameter iron pipe at the fence intersection. Fences running north, east and west. This was 10.79 feet south of a straight line between the section corners and we had a distance of 2662.05 feet to the northwest corner and 2647.23 feet to the northeast corner of Section 9.

June 28, 1979. We set a McLeod County cast iron monument in place of the iron pipe and took reference ties.

February 24, 1989. We found the cast iron monument in good condition, top flush with the ground. Old reference ties all destroyed. We took new reference ties.

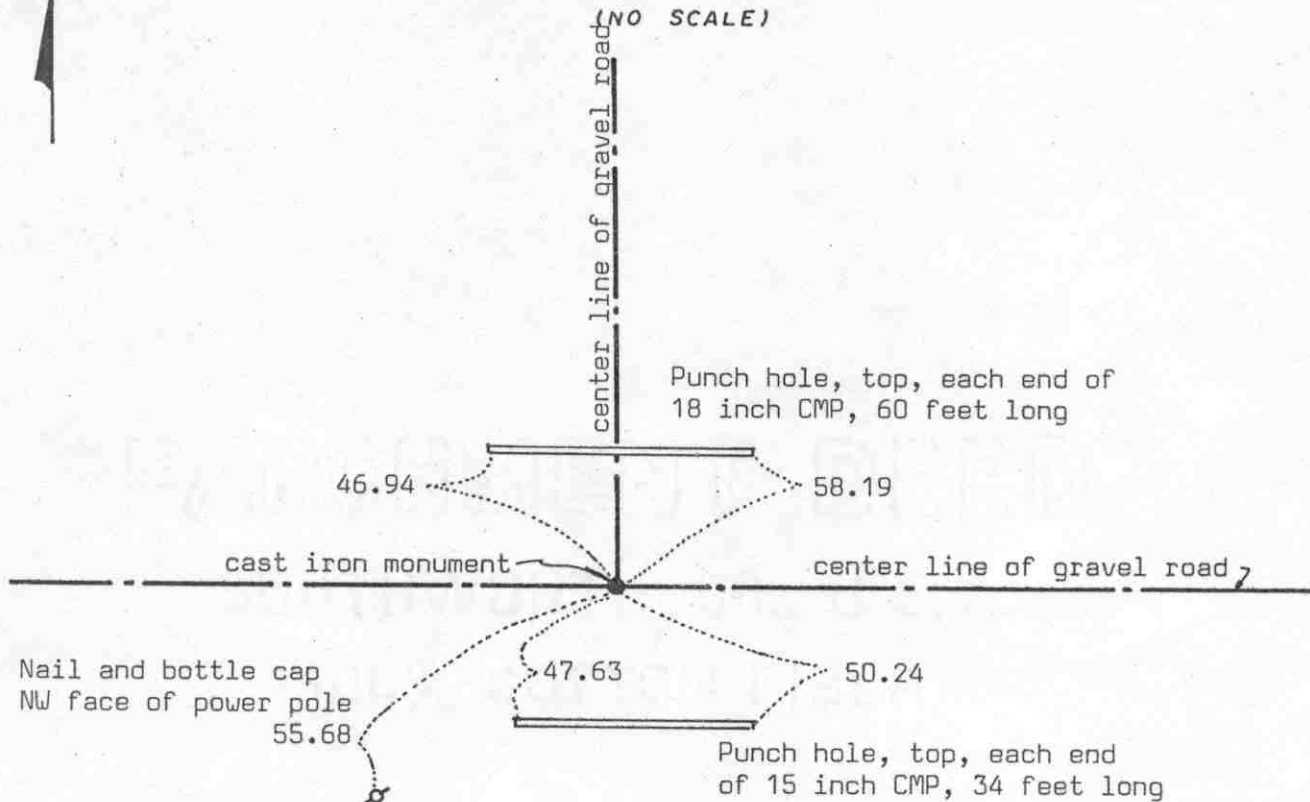
We believe the iron pipe we found was set by E.L.Higgins in 1930 and that it had perpetuated the correct location of the quarter corner.

# Certificate of Location of Government Corner



## SKETCH OF REFERENCE TIES

(NO SCALE)



Statement of evidence relative to this corner location on sheet 2

I hereby certify that this document was prepared by me or under my direct supervision.

Willard Pellinen

Willard Pellinen  
McLeod County Surveyor  
License No. 9626

Date 8/5/89

OFFICE OF THE COUNTY RECORDER  
MCLEOD COUNTY, MINNESOTA.

I hereby certify that this document was filed in this office at 9 o'clock A.M. on the 15th day of Aug., 1989.

Carmen Oetli, County Recorder

By \_\_\_\_\_, Deputy

Document No. 229481



NORTHEAST            corner, Section 10, Township 116 North, Range 30 West

## Certificate of Location of Government Corner

This corner was originally set by the General Land Office in 1855. Thomas Simpson "set post, corner to sections 2, 3, 10 and 11. Erected mound with trench, pits, charred stake and osage orange seeds at each angle."

December, 1938. E.L.Higgins' survey shows an iron stake at the corner. He had a distance of 2657.37 feet to the north quarter corner of Section 11 and a distance of 2667.5 feet to the east quarter corner of Section 3.

1966. Roy Hansen, surveyor, found an iron stake at the corner at the center line intersection of the roads.

1967. Lew Merrill, former county surveyor, said the iron stake at the intersection of the roads is the correct corner.

1968. McCombs Knutson Associates, Dickman Knutson, county surveyor, found an iron stake at the center line intersection of the roads and replaced it with a McLeod County cast iron monument.

May 9, 1984, we found the cast iron monument and took reference ties. Road to be graded.

July 12, 1985! We reset a cast iron monument at the corner and took new reference ties.

February 24, 1989. We found the cast iron monument in good condition and the reference ties good.

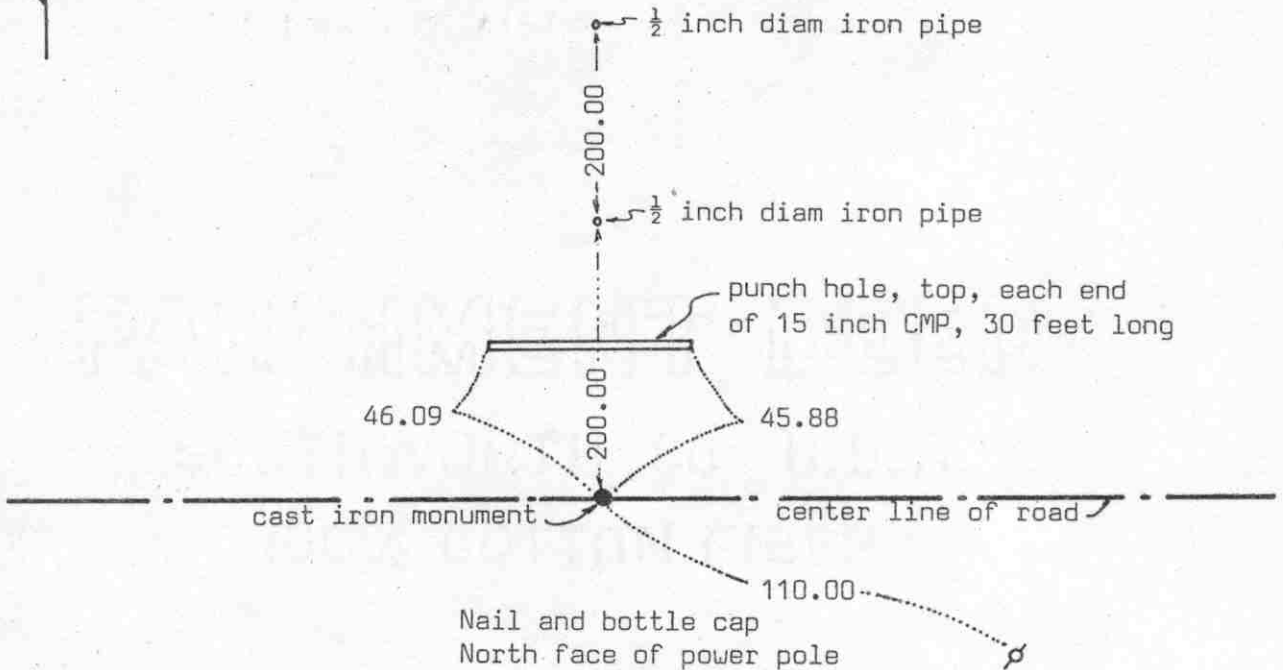
We believe the iron stake found by Knutson was the same iron stake shown in Higgins' 1938 survey and that it had perpetuated the correct location of the section corner.

### Certificate of Location of Government Corner



SKETCH OF REFERENCE TIES

(NO SCALE)



Statement of evidence relative to this corner location on sheet 2

I hereby certify that this document was prepared by me or under my direct supervision.

Willard Pellinen

Willard Pellinen  
McLeod County Surveyor  
License No. 9626

Date 8/5/89

OFFICE OF THE COUNTY RECORDER  
MCLEOD COUNTY, MINNESOTA.

I hereby certify that this document was filed in this office at 9 o'clock A.M. on the 15th day of Aug, 19 89.

Carmen Ostlie, County Recorder

By \_\_\_\_\_, Deputy

Document No. 229482

NORTH QUARTER corner, Section 10, Township 116 North, Range 30 West

## Certificate of Location of Government Corner

This corner was originally set by the General Land Office in 1855. Thomas Simpson set a post, built mound with trench and pits, charred stake and planted osage orange seeds at northeast and southwest corners of mound.

January 1974. We chained the north line of Section and set a temporary corner on line and half way between section corners. 1927 survey by E.L.Higgins shows corner to be half way between section corners. About 3 feet north of our temporary corner we found a spike down 1 foot and a stone below the spike, down about 2 feet below the surface. This was within 2 tenths of a foot of being half way between the section corners.

August 5, 1974. We set a McLeod County cast iron monument in place of the stone and took reference ties.

May 5, 1984. We set 2 iron pipes north of the cast iron monument 200.00 feet apart for reference ties to reset the corner. Corner and old reference ties will be destroyed due to road construction.

July 15, 1985. We reset a cast iron monument at the corner and took new reference ties.

February 24, 1989. We found the cast iron monument in good condition and the reference ties good.

We accept the stone we found in 1974 as having perpetuated the true quarter corner.

# CERTIFICATE OF LOCATION OF GOVERNMENT CORNER

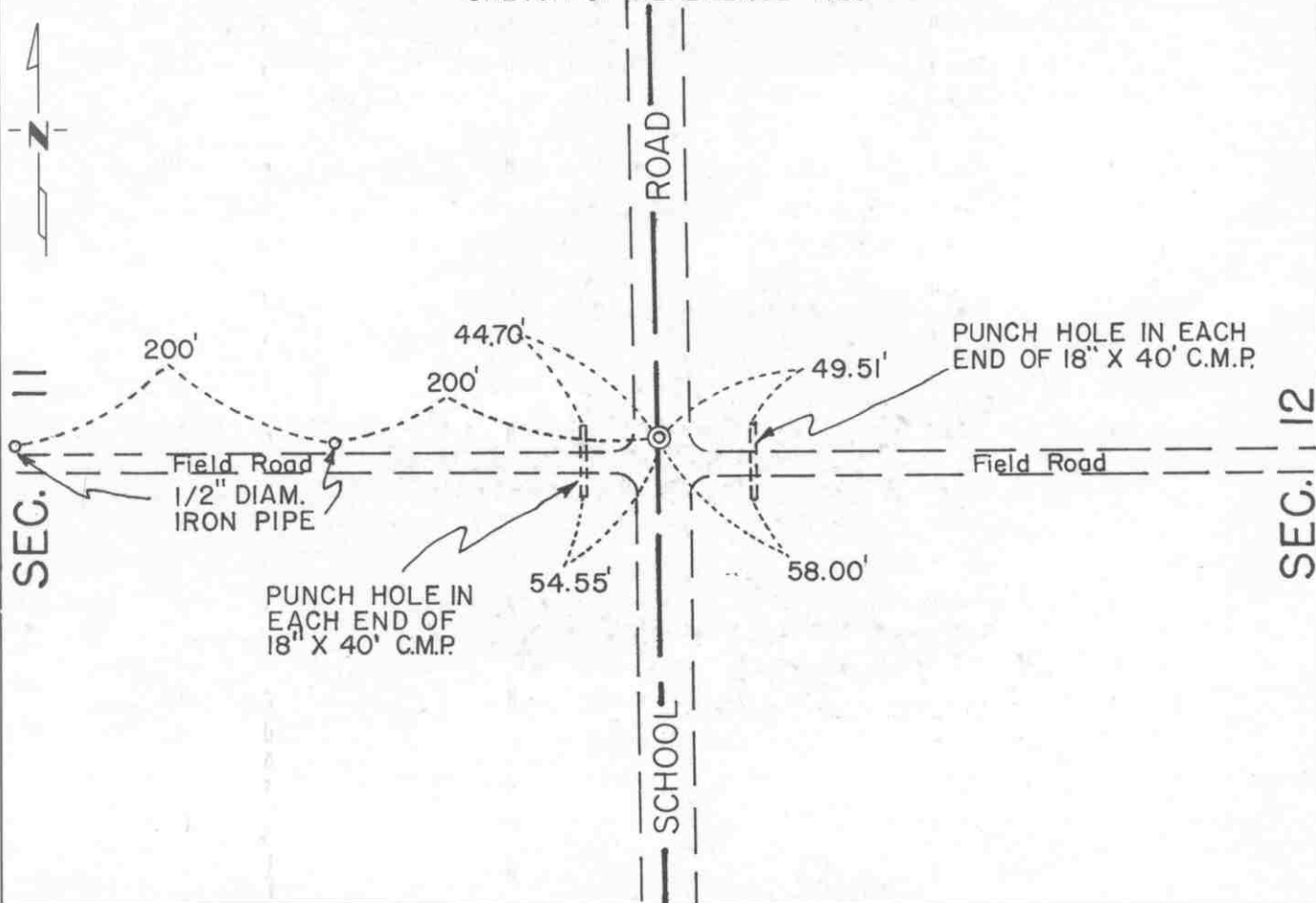
East Quarter \_\_\_\_\_ Corner of Section 11, Township 116 N, Range 30 W, 5th P.M.

STATE OF MINNESOTA, County of McLeod

At the corner location shown on the sketch:

- On August 5, 1991 found a 2 reference ties set in 1989 that exactly fit a strong indication  
DATE  
of iron, which is most probably a 1/2" diameter iron pipe set in 1990 from these ties  
 left monument as found,  lowered monument,  removed monument (explain)
- On August 5, 1991 placed a railroad spike at road surface using the reference ties  
DATE

SKETCH OF REFERENCE TIES



Statement of evidence relative to this corner location is on back of page.

I hereby certify that this document and the data contained herein was prepared by me or under my direct supervision.

Robert Jones  
SIGNATURE

8-26-91  
DATE

Registration No. 11864

- Land Surveyor,  Professional Engineer
- County Surveyor,  County Engineer

OFFICE OF THE COUNTY RECORDER

County of McLeod

I hereby certify that this document was filed in the Co. Recorders office at 2 P .M. on the 18th day of Sep A.D., 1991

County Recorder Armen Ostlie

By \_\_\_\_\_, Deputy

DOCUMENT NO. 241049

Statement of Evidence:

East Quarter Corner Section 11, T 116 N, R 30 W

- 1855 - The original Public Land Survey was completed by Thomas Simpson. A wood post was set over a charred stake in a dirt mound to mark the corner. Trenches and pits were dug to build the mound. Osage orange was planted at the northeast and southwest corners of the mound.
- 1899 - E. L. Higgins, McLeod County Surveyor, found the place of the original corner and measured a distance of 2671.5 feet to the northeast corner of the section.
- 1931 - E. L. Higgins found an I.P. at the corner and measured 2673.2 feet to the northeast corner of the section.
- 1968 - Dickman Knutson, McLeod County Surveyor, found a flat iron monument at the corner. It measured 1/4" thick by 1 1/2" wide by 2 feet long. He measured a distance of 2673.2 feet to the northeast corner of the section.
- 1971 - Dickman Knutson replaced the flat iron monument with a McLeod County cast iron monument and set reference ties.
- 1989 - Willard Pellinen, McLeod County Surveyor, found the cast iron monument and set two new reference ties.
- 1990 - Willard Pellinen reset the corner from the reference ties set in 1989. The corner had been destroyed when the McLeod County Highway Department constructed School Road in this area. No north/south road existed in this area before. A 1/2" diameter iron pipe was set to mark the corner.
- 1991 - R. C. Jones, Registered Land Surveyor with Mn/DOT, found two iron pipe reference ties set by Pellinen in 1989. An instrument was set over the westernmost pipe and the line was extended easterly through the easternmost pipe a distance of 200 feet. A strong indication of iron was found at the spot where the 1/2" diameter iron pipe should be. The road had been newly surfaced with bituminous, so it was decided not to dig for the pipe because the indication of iron fit the reference ties exactly. A railroad spike was set at the road surface according to the reference ties.

The railroad spike is accepted as the corner location because the record appears to provide a continuous chain of evidence perpetuating the location of the original Public Land Survey corner.

For additional information, contact the Mn/DOT Surveys Section at Willmar, Mn 56201.

NORTHEAST corner, Section 11, Township 116 North, Range 30 West

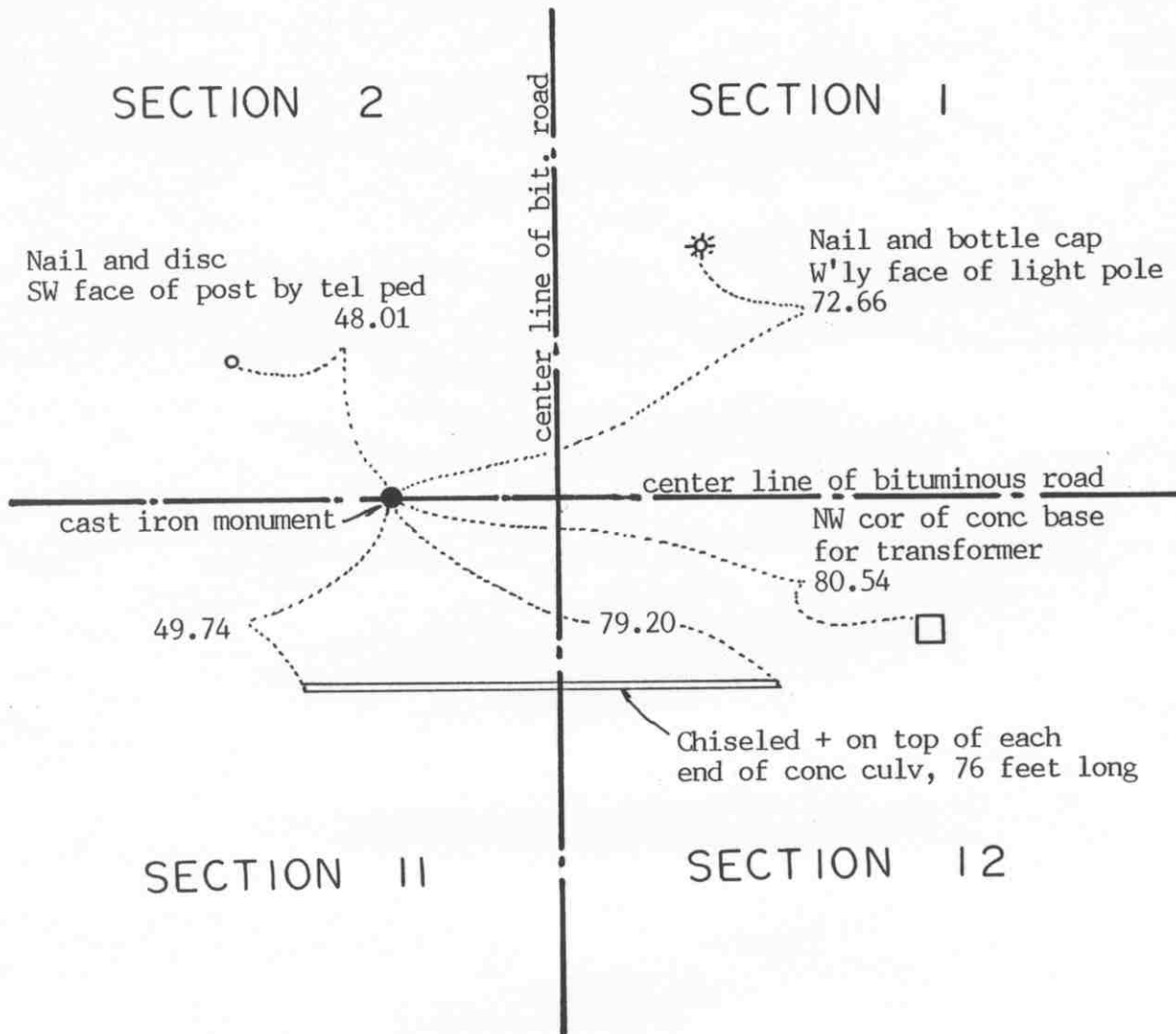
# Certificate of Location of Government Corner

SKETCH OF REFERENCE TIES  
(NO SCALE)



SECTION 2

SECTION 1



SECTION 11

SECTION 12

Statement of evidence relative to this corner location on sheet 2

I hereby certify that this document was prepared by me or under my direct supervision.

Willard Pellinen  
Willard Pellinen  
McLeod County Surveyor  
License No. 9626

Date July 23, 1993

OFFICE OF THE COUNTY RECORDER  
MCLEOD COUNTY, MINNESOTA.

I hereby certify that this document was filed in this office at 4 o'clock P. M. on the 5th day of August, 19 93.

Carmen Estlin Mulder, County Recorder

By \_\_\_\_\_, Deputy

Document No. 254003

## Certificate of Location of Government Corner

This corner was established in 1855 by Thomas Simpson of the Government Land Office. He set post, erected mound with trench and pits, charred stake and he planted osage orange seeds at each corner of the mound.

1931 survey by E.L.Higgins shows he found a stone and stake at this corner and he set a steel corner. He had a distance of 2617 feet to the north quarter corner of Section 12 and a distance of 2673.3 feet to the east quarter corner of Section 11.

On August 16, 1971, we found an iron pin at this corner and we replaced it with a McLeod County cast iron monument and took available reference ties. We measured 2617.77 feet to the north quarter corner of Section 12 and 2673.02 feet to the east quarter corner of Section 11.

On July 20, 1988, we found that the cast iron monument had been moved and damaged by road construction, and reference ties destroyed. We set a spike at the corner using monumentation in Section 1 from our previous surveys. We took new reference ties and will reset monument after road has been resurfaced.

We accept the iron pin we found in 1971 as marking the true location of the northeast corner of Section 11. The distances east and south are very nearly the same as in the old surveys and this corner has been used as the correct corner by many surveyors in the past.

February 24, 1989. Reference to corner o.k.

April 6, 1993. We found the bottom of the cast iron monument to be good shape (top broken off) and took new reference ties.

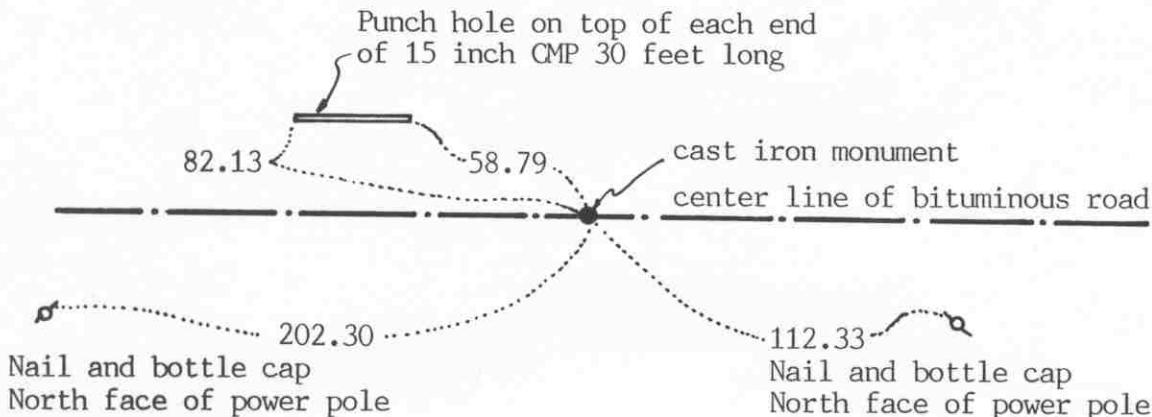
# Certificate of Location of Government Corner

## SKETCH OF REFERENCE TIES

(NO SCALE)



### SECTION 2



### SECTION 11

#### Statement of evidence relative to this corner on sheet 2

I hereby certify that this document was prepared by me or under my direct supervision.

Willard Pellinen  
 Willard Pellinen  
 McLeod County Surveyor  
 License No. 9626.

Date Feb. 3, 1991

OFFICE OF THE COUNTY RECORDER  
 MCLEOD COUNTY, MINNESOTA.

I hereby certify that this document was filed in this office at 9 o'clock A.M. on the 7th day of Feb, 1991.

Carmen Ostlie, County Recorder.

By \_\_\_\_\_ Deputy.

Document No. 237436



## Certificate of Location of Government Corner

August, 1855. Thomas Simpson of the General Land Office originally established this corner. He set a post in a mound with trench, pits, charred stake and he planted osage orange seeds at the northeast and southwest corners of the mound.

1938. Survey by E.L.Higgins, county surveyor, shows the quarter corner to be half way between the section corners, 2657.37 feet each way.

1967. Lew Merrill, former county surveyor, said there is an iron stake at the corner, used by him and also by E.L.Higgins.

October, 1968. McCombs Knutson Associates (Dickman Knutson, county surveyor) found an iron stake down 2 feet below the road surface. They set a spike at the surface and took reference ties.

19???. Knutson set a McLeod County cast iron monument.

May 9, 1984. We found no reference ties remaining. We dug and found the cast iron monument down 2 feet below the road surface, in good condition. We set a new monument over the old one and took new reference ties. We measured the north line of Section 11 and found the monument to be within a tenth of a foot of being half way between the section corners.

February 21, 1990. We found the monument in good condition and the reference ties good.

# CERTIFICATE OF LOCATION OF GOVERNMENT CORNER

East Quarter Corner of Section 12, Township 116 N, Range 30 W, 5th P.M.

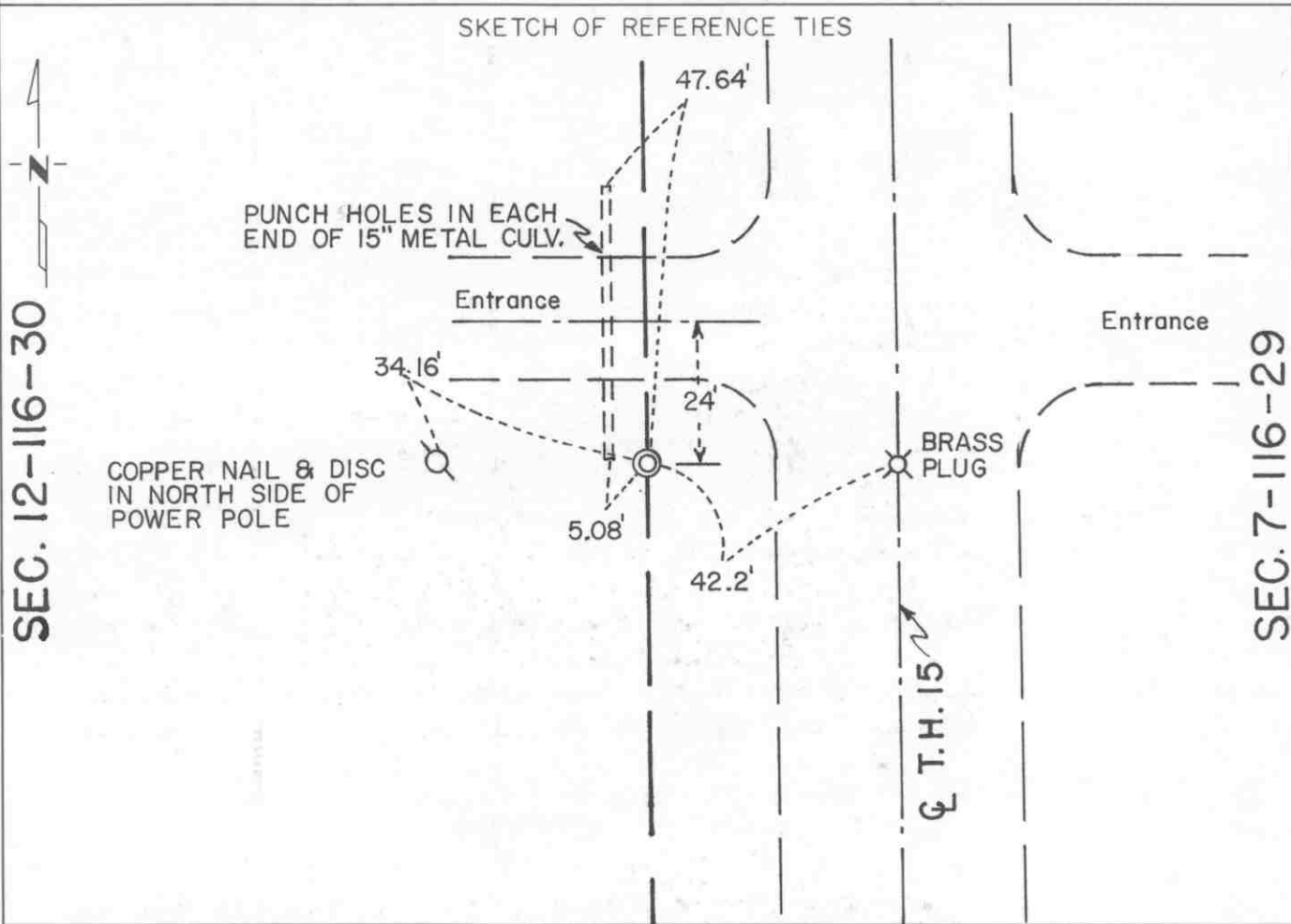
STATE OF MINNESOTA, County of McLeod

At the corner location shown on the sketch:

On June 13, 1991 found a 1/2" diameter iron pipe at ground surface  
DATE

left monument as found,  lowered monument,  removed monument (explain)

On \_\_\_\_\_ placed a \_\_\_\_\_  
DATE



Statement of evidence relative to this corner location is on back of page.

I hereby certify that this document and the data contained herein was prepared by me or under my direct supervision.

Robert Gans 8-26-91  
SIGNATURE DATE

Registration No. 11864

- Land Surveyor,  Professional Engineer
- County Surveyor,  County Engineer

OFFICE OF THE COUNTY RECORDER  
County of McLeod

I hereby certify that this document was filed in the Co. Recorders office at 2 P .M. on the 18th day of Aug A.D. 1991

County Recorder Carmen Ostlie

By \_\_\_\_\_, Deputy

DOCUMENT NO. 241051

Statement of Evidence:

East Quarter Corner Section 12, T 116 N, R 30 W

- 1855 - The original Public Land Survey of the township line was completed by John Ryan. A wood post was set over a deposit of charcoal in a dirt mound to mark the corner. Trenches and pits were dug to build the mound. Osage orange was planted at the corners of the mound.
- 1941 - The Minnesota Highway Department right of way map shows the corner to be 42.0 feet west of T.H. 15 P.O.T. 1202+86.0. It was located at the centerline of a north/south road and on an east/west fence line.
- 1970 +/- Dickman Knutson, McLeod County Surveyor found an iron pin 42.0 feet west of the centerline of T.H. 15, which he thought was set by the Minnesota Highway Department. He set a McLeod County cast iron monument to mark the corner.
- 1983 - R. C. Jones, Registered Land Surveyor with Mn/DOT, found the cast iron monument 41.95 feet west of T.H. 15 P.O.T. 1202+86.77 and filed a certificate with the McLeod County Recorder, Document No. 202052.
- 1989 - Willard Pellinen, McLeod County Surveyor, reset the corner according to previous section subdivisions because the monument was destroyed when T.H. 15 was reconstructed in 1988. He set a 1/2" diameter iron pipe to mark the corner.
- 1990 - A Mn/DOT survey crew found the iron pipe.
- 1991 - R. C. Jones found a 1/2" diameter iron pipe at the surface of an entrance and all but one reference tie.

The iron pipe is accepted as the corner location because it is found to be 42.02 feet west of T.H. 15 P.O.T. 1202+86.90, which closely agrees with all positions shown by various surveys since 1941.

For additional information, contact the Mn/DOT Surveys Section at Willmar, Mn 56201.

# CERTIFICATE OF LOCATION OF GOVERNMENT CORNER

Northeast Corner of Section 12, Township 116 N., Range 30 W., 5th P.M.

STATE OF MINNESOTA, County of McLeod

At the corner location shown on the sketch:

On June 13, 1991 found a P.K. nail at the highway surface  
DATE

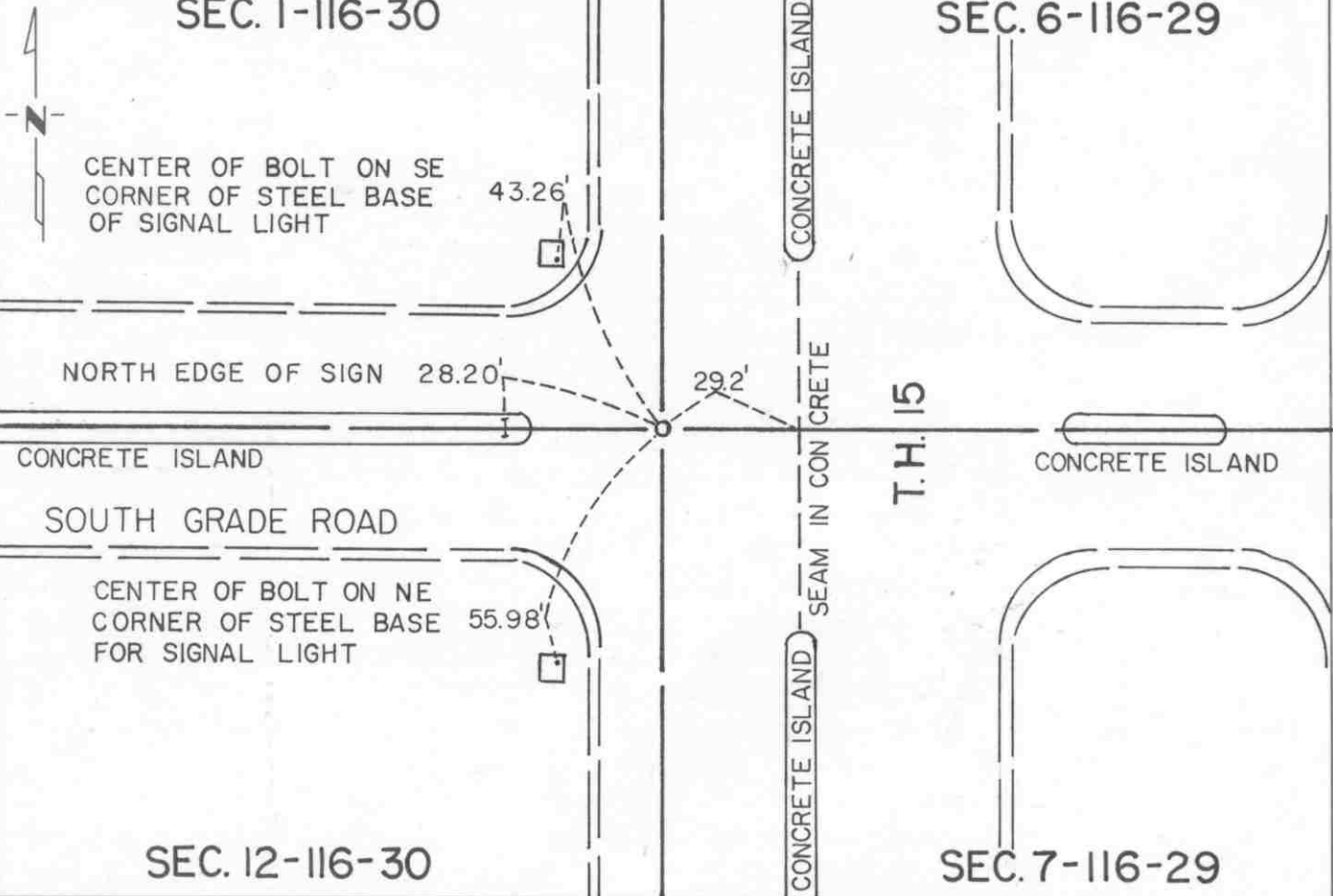
left monument as found,  lowered monument,  removed monument (explain)

On \_\_\_\_\_ placed a \_\_\_\_\_  
DATE

### SKETCH OF REFERENCE TIES

SEC. 1-116-30

SEC. 6-116-29



Statement of evidence relative to this corner location is on back of page.

I hereby certify that this document and the data contained herein was prepared by me or under my direct supervision.

Robert Gaus  
SIGNATURE

8-19-91  
DATE

Registration No. 11864

Land Surveyor,  Professional Engineer

County Surveyor,  County Engineer

OFFICE OF THE COUNTY RECORDER

County of McLeod

I hereby certify that this document was filed in the Co. Recorders office at 2 P .M. on the 18th day of Sep A.D. 1991

County Recorder Armen Ostlie

By \_\_\_\_\_, Deputy

DOCUMENT NO. 241050

Statement of Evidence:

Northeast Corner Section 12, T 116 N, R 30 W

- 1855 - The original Public Land Survey of the township line was completed by John Ryan. A wood post was set over a deposit of charcoal in a dirt mound to mark the corner. Osage orange was planted at the corners of the mound.
- 1899 - E. L. Higgins, McLeod County Surveyor, started a survey from a fence corner and measured 2672 feet to the east quarter corner of Section 12. It is not known what may have marked the corner at that time.
- 1917 - Lewis Merrill, McLeod County Surveyor, found a stone at the corner and measured 2637 feet to the east quarter corner and 2664.8 feet to the north quarter corner of the section.
- 1940 - E. L. Higgins found a 2 1/2" diameter iron pipe with a brass cap on top at the corner. This was probably set by Carlisle Madson, Sr. who was County Surveyor from 1923 to 1931.
- 1941 - The Minnesota Highway Department right of way map show that an iron pipe with a brass cap was found 39.5 feet west of P.O.S.T. 1229+60.
- 1967 - Dickman Knutson, McLeod County Surveyor, found the corner that H. A. Pabst, an engineer for the Minnesota Highway Department, set in 1942 to replace the iron pipe with a brass cap that was found in 1941.
- 1968 - Dickman Knutson set a McLeod County cast iron monument to replace the monument found in 1967.
- 1971 - Dickman Knutson set a cast iron monument to replace the one that was destroyed when South Grade Road was reconstructed.
- 1983 - Willard Pellinen, McLeod County Surveyor, found the cast iron monument and all ties in good condition.  
R. C. Jones, Registered Land Surveyor with Mn/DOT, found the cast iron monument and filed a certificate with the McLeod County Recorder, Document No. 202053.
- 1989 - Willard Pellinen set a P.K. nail at the surface of the concrete to replace the cast iron monument that was destroyed when T.H. 15 was reconstructed in 1988. The location was established from monumentation of surveys in the area.
- 1991 - R. C. Jones found the P.K. nail at the road surface. It is accepted as the corner position because it fits a number of surveys in the area, it fits Higgin's 1899 distance to the east quarter corner within 2.5 feet, it fits Merrill's 1917 distance to the north quarter corner within 1.5 feet, and it was found to be 17.1 feet westerly of T.H. 15 South Bound Lane P.O.S.T. 1229+60.39. This position translates into being 39.1 feet westerly of the old T.H. 15 P.O.S.T. The S.B.L. of T.H. 15 is 22 feet westerly of the centerline shown on the 1941 right of way map.

For additional information, contact the Mn/DOT Surveys Section at Willmar, Mn 56201.

# CERTIFICATE OF LOCATION OF GOVERNMENT CORNER

North Quarter Corner of Section 12, Township 116 N, Range 30 W, 5th P.M.

STATE OF MINNESOTA, County of McLeod

At the corner location shown on the sketch:

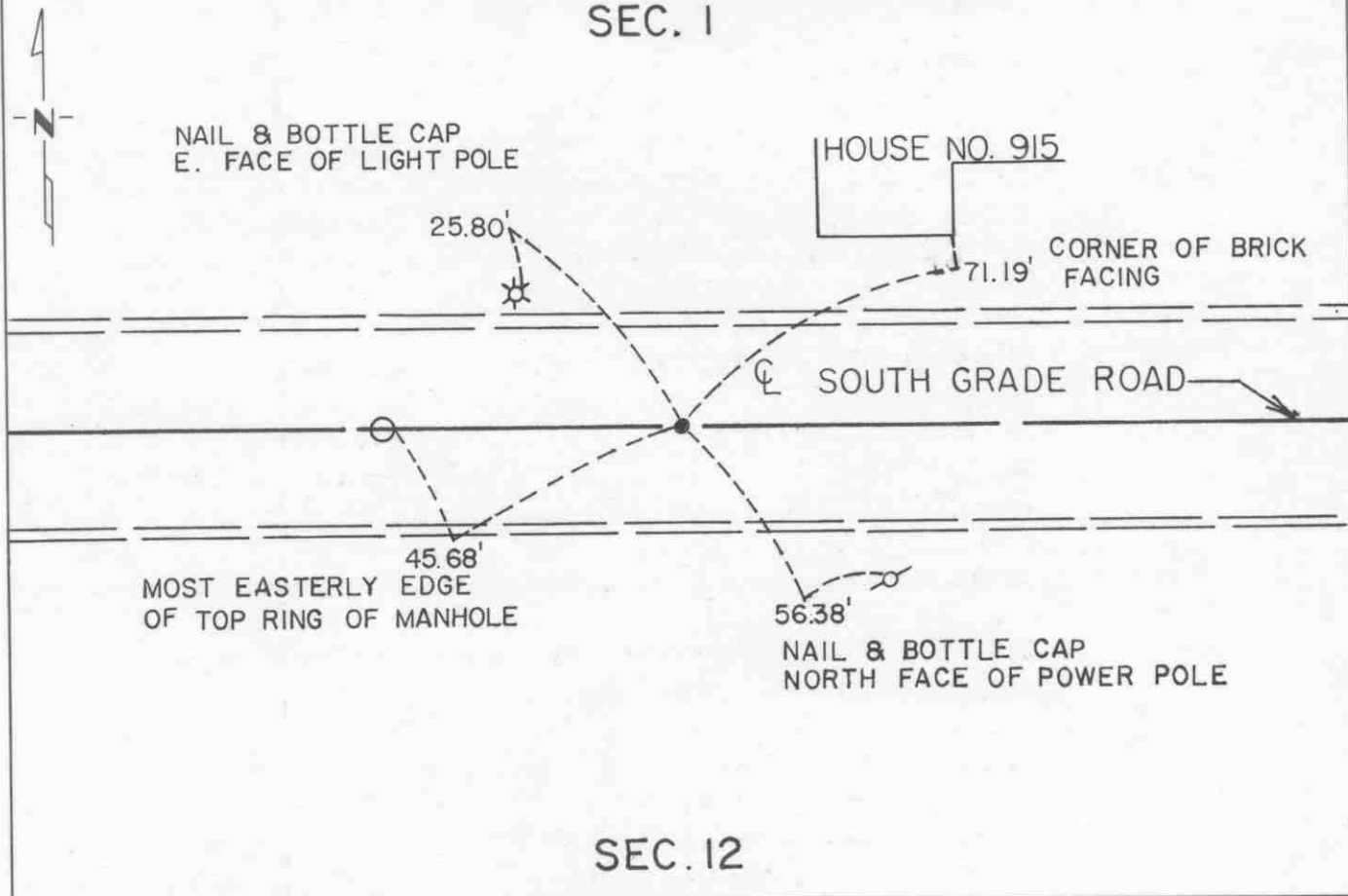
On June 13, 1991 found a railroad spike at the road surface  
DATE

left monument as found,  lowered monument,  removed monument (explain)

On \_\_\_\_\_ placed a \_\_\_\_\_  
DATE

## SKETCH OF REFERENCE TIES

### SEC. 1



### SEC. 12

Statement of evidence relative to this corner location is on back of page.

I hereby certify that this document and the data contained herein was prepared by me or under my direct supervision

Robert C. Jones  
SIGNATURE

8-20-91  
DATE

Registration No. 11864

Land Surveyor,  Professional Engineer

County Surveyor,  County Engineer

OFFICE OF THE COUNTY RECORDER  
County of McLeod

I hereby certify that this document was filed in the Co. Recorders office at 2 P.M. on the 18th day of Sep, A.D. 1991

County Recorder Carmen Ostlie

By \_\_\_\_\_, Deputy

DOCUMENT NO. 241052

Statement of Evidence:

North Quarter Corner Section 12, T 116 N, R 30 W

- 1855 - The original Public Land Survey was completed by Thomas Simpson. A wood post was set over a charred stake in a dirt mound to mark the corner. Trenches and pits were dug to build the mound. Osage orange was planted at the northeast and southwest corners of the mound.
- 1899 - E. L. Higgins, McLeod County Surveyor, found a post in a mound.
- 1927 - Survey notes show a stone at the corner.
- 1931 - Survey notes show an iron pipe at the corner and a distance of 2664.8 feet to the northeast corner and a distance of 2617 feet to the northwest corner of the section.
- 1966 - Roy Hansen, surveyor, found an iron pipe at the corner and used it for a survey.
- 1967 - Dickman Knutson, McLeod County Surveyor, found an iron pipe at the corner. Lew Merrill, County Surveyor from 1943 to 1955, said the iron pipe is the correct corner and had been used by himself and E. L. Higgins since the 1930's at least.
- 1973 - Dickman Knutson set reference ties to the corner because it was to be destroyed by road construction.
- 1979 - Willard Pellinen, McLeod County Surveyor, set a railroad spike to mark the corner from the 1973 reference ties.
- 1989 - Willard Pellinen found the railroad spike and set new reference ties.
- 1991 - R. C. Jones, Registered Land Surveyor with Mn/DOT, found the railroad spike at the road surface.

The railroad spike is accepted as the corner location because the record provides a continuous chain of evidence perpetuating the location of the original Public Land Survey corner. It is located at the centerline of South Grade Road. The distances to the northeast corner and the northwest corner of the section are 2663.56 feet and 2617.78 feet respectively.

For additional information, contact the Mn/DOT Surveys Section at Willmar, Mn 56201.